



South Yorkshire
Integrated Care Board

Strategy and Planning in South Yorkshire

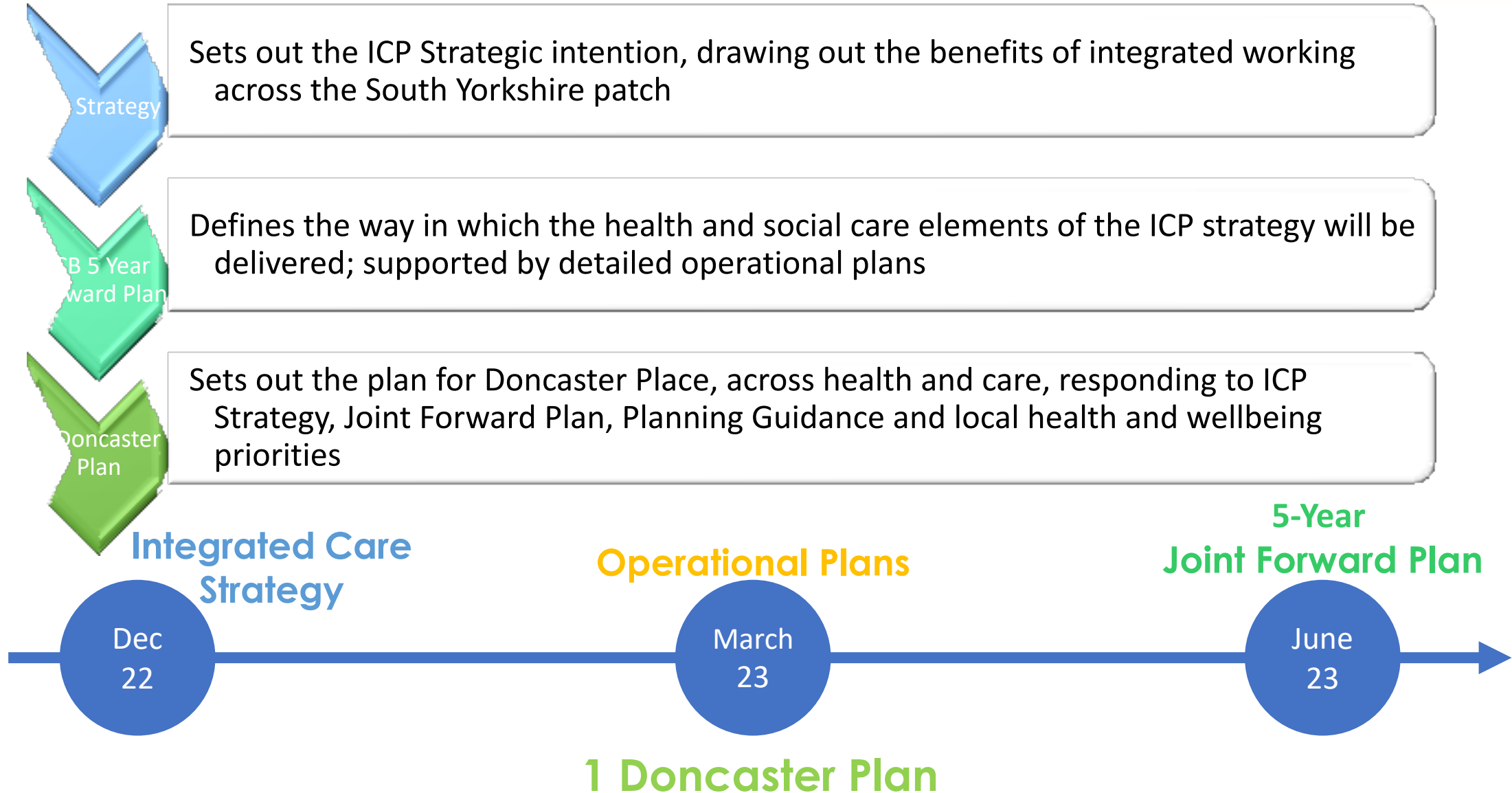
Developing our NHS 5 Year Joint Forward Plan

June 2023

Contents

1. Strategy & planning timeline
2. South Yorkshire Integrated Care Strategy
3. Developing our 5 year NHS Joint Forward Plan for South Yorkshire
4. Next steps

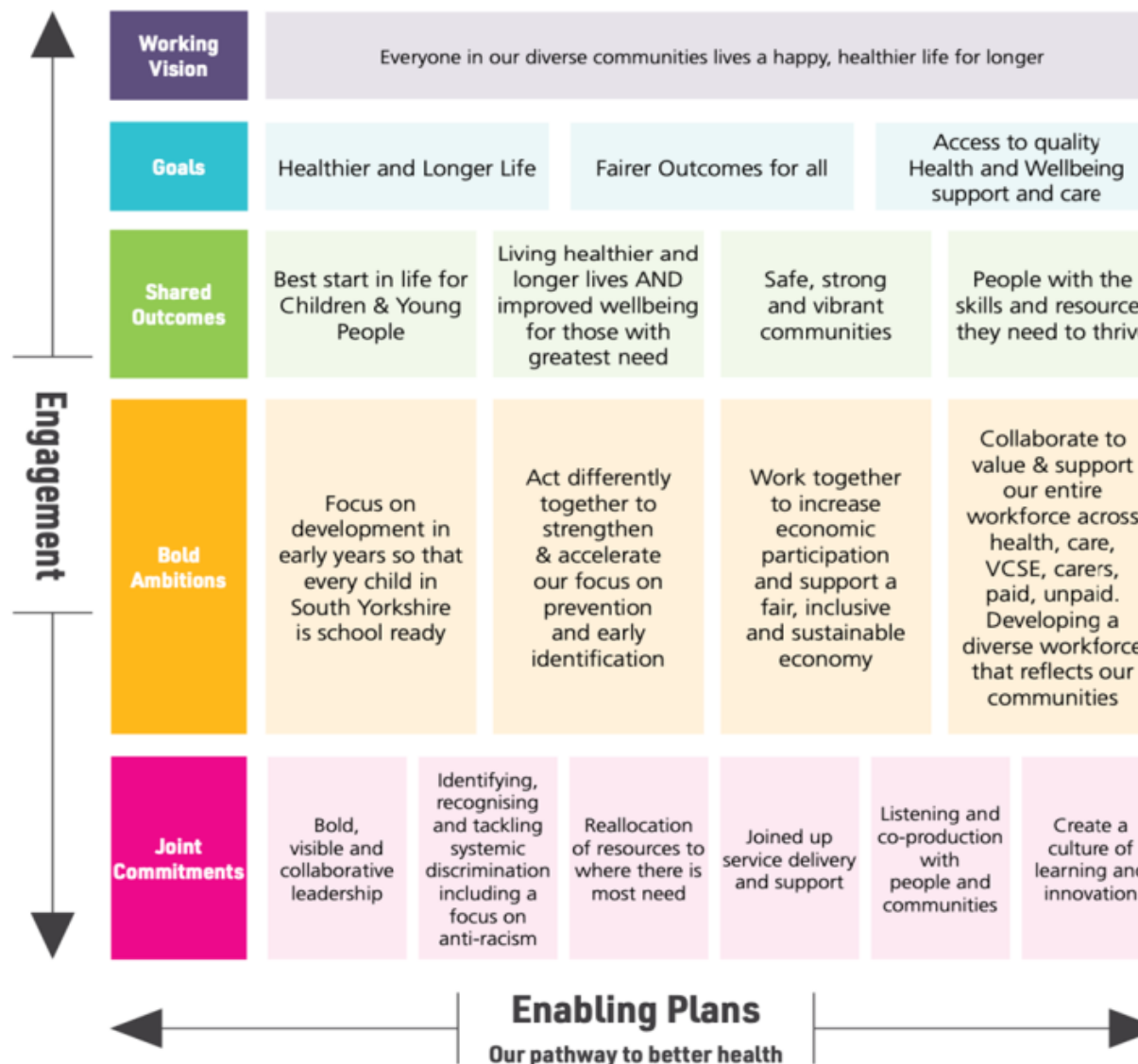
What is the ambition?



South Yorkshire Integrated Care Partnership Strategy

Summary Plan on a Page

Our Shared Outcomes, Bold Ambitions and Joint Commitments





South Yorkshire
Integrated Care Board

Developing our NHS JFP for South Yorkshire...

Continuing the conversation

To inform JFP...

Three pronged approach:

- Working with Healthwatch to hear from more of our underserved communities (those we didn't hear from during the ICP involvement)
- Supporting our programmes to tap into their citizen involvement mechanisms to ensure patient voice shapes their parts of the plan
- Campaign to understand more from wider population about the key themes identified within the ICP Strategy involvement – Access and Quality



Developing our SY NHS Joint Forward Plan...

We have drawn from....

Taken a distributed leadership approach and collated inputs and identified priorities across ...

- National Guidance
- ICS key purposes
- SY Pop Health Needs
- ICP Strategy, Bold Ambitions and Joint Commitments
- All existing plans

South Yorkshire Health Needs	Medicines Optimisation
Population Health Management	Acute Fed, Elective & Diagnostics
Health Inequalities	Digital, data and technology
Prevention	Workforce
Primary Care	Estates
Sustainability	Finance & capital
Children & Young People	Innovation & improvement
Maternity	Specialised Commissioning
Mental Health	Integrated Community Services
Learning disabilities and autism	Urgent and Emergency Care
LTCs /personalised Care	Communication and engagement
Cancer	VCSE

Identified these as key..

- Voice of our population and workforce
- Delivery focus on desired outcomes
- Key enablers & cross cutting themes
- Making the best use of resources



Brought together lead(s) to share...

South Yorkshire Joint Forward Plan Summary

Taking a preventative, population health approach and reducing health inequalities in all we do...

Improving quality, access and transforming care

Working in partnership with people and communities and VCSE

<p>Improving maternity services</p> <p>and services for children and young people (0-25 years)</p>	<p>Improving access to Primary Care</p> <p>(GPs, PCNs community pharmacists, optometrists and dentists)</p>	<p>Transforming community services</p> <p>(proactive integrated community teams/PCNs & urgent community response)</p>	<p>Developing alternatives to ED, including virtual wards,</p> <p>improving ED processes, hospital flow and discharge)</p>	<p>Recovering & optimising cancer, elective and diagnostic pathways, implementing best practice & reducing variation</p>	<p>Improving access and transforming mental health services for children and young people and adults</p>	<p>Improving access & redesigning specialist services for those with learning disabilities & autism</p>
--	--	--	--	---	---	--

Supporting & developing our entire workforce

Data, digital and innovation

Making best use of our collective resources

- **Ongoing Engagement** – continue to enable ongoing engagement, ensuring that feedback is independently analysed and actively used to inform our JFP.
- **Building on Integrated Care Strategy Outcomes Framework** - build a clearer articulation of success measures and further develop our System Outcomes Framework and Dashboard.
- **Strengthening underpinning intelligence** - further use of data and intelligence to underpin the plan and build confidence regarding impact.
- **Develop full draft JFP** - continue to develop the ‘working draft’ JFP responding to feedback and develop a full draft plan for sharing in early June.